



**SLOPETAME3**  
BY INVISIBLE STRUCTURES™



ALWAYS MAKING  
THE GRADE





## **A BETTER ANGLE FOR EROSION CONTROL**

Slopetame3 provides an immediate and long-lasting solution to erosion and sedimentation problems. Using our trademark interlocking ring-on-grid design with the added benefit of crossbars on every row, Slopetame3 is a one-of-a-kind, permanent reinforcement and stabilization system that is strong enough to support pedestrians and light vehicles.

## **NEVER BACKING DOWN**

The attached geotextile filter fabric will never come off and allows for the growth and containment of vegetation. Even with only a 1" depth required, Slopetame3 can permanently stabilize slopes with angles up to 45 degrees.







## ANCHORS AWAY

Duckbill anchors (68 series) are included with every roll. This is the primary anchorage that has a loop end of cable secured over 0.75" dia. steel reinforcing bar (with corrosion protection in aggressive soils).

Invisible Structures supplies enough anchors to cover one per 108 ft<sup>2</sup> (10 m<sup>2</sup>). Surfaces subjected to heavy water submersion or action, shall require Duckbill/rebar anchors spaced at 1 per 6.6' (2 m) on center.

Secondary anchorage shall be anchor pins made of either heavy gauge (8 - 12) wire "U" shaped, or 8" long nails with "fender" type washers 0.25" id x 1.25" (5 x 30 mm od), all galvanized metal or similar coating to resist corrosion.



Slopetame3

## THE SLOPETAME3 ADVANTAGES



Permanent Stabilization



Strong Enough to Support Pedestrians and Light Vehicles



Vegetation Containment



Lightweight and Quick and Easy to Install



Made From 100% Recycled Plastic



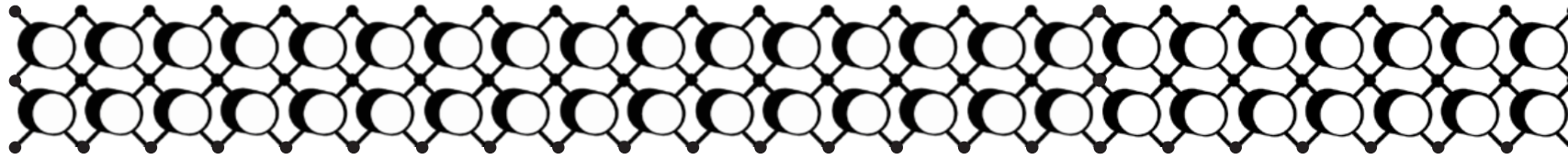
Controlled Porosity



UV Resistant



# APPLICATIONS



**Bank Stabilization**



**Vegetated Swale Applications**



**Stormwater Infiltration Trenches**



**1:1 Slope Erosion Control**





# IT'S EASY BEING GREEN

Sustainability starts from the ground up. Slopetame3 not only protects the environment, but it also enhances it. All our products are made from 100% recycled plastic—plastic that goes into improving the environment and not into a landfill.

**Other benefits include:**

- All our products are made from 100% recycled plastic.
- 1.5 million pounds of recycled plastic are used every year (and not sent to a landfill).
- Reduces erosion and soil migration.
- Reduces site disturbance.

**1.5 MILLION POUNDS**

of recycled plastic are used every year for Invisible Structures products



Sustainability





## INSTALLATION AND MAINTENANCE

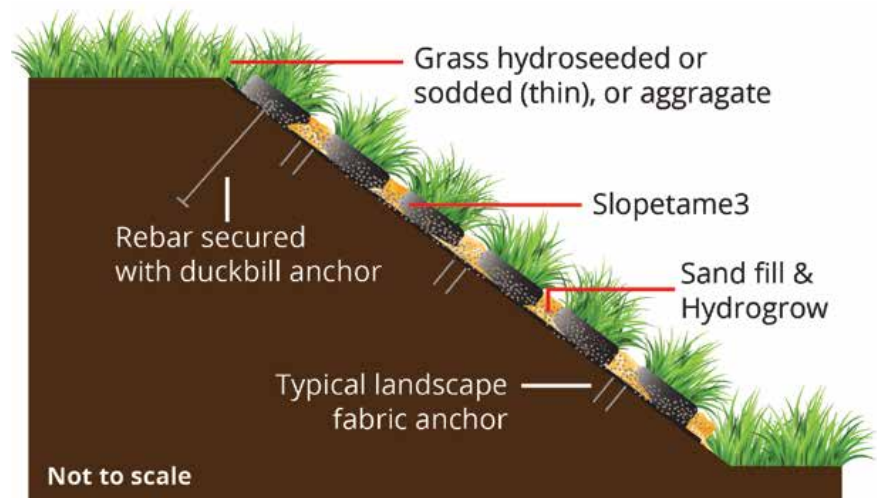
### INSTALLATION

- Install Slopetame3 units from top to bottom of slope, ensuring rings face up and crossbars oppose primary water flow. Use pruning shears for cutting and trimming.
- Anchor units with Duckbill/rebar anchors at top and middle of slope. Add extra anchors if parts are submerged.
- Secure edges with wire anchor pins, 1 per 10.8 ft<sup>2</sup> (1 m<sup>2</sup>) or more as needed. Ensure rings are flush with or slightly below adjacent surfaces.
- Fill rings with topsoil by “up-dumping”. Spread soil uphill using stiff brooms, with finish grade not exceeding .24” (6 mm) above rings. Do not use motorized equipment over Slopetame3 during installation.
- To add plants with root balls >3.9” (10 cm), remove soil and Slopetame3 from area twice the root ball diameter, excavate hole, place plant, and backfill with topsoil. Set crown of root ball .47” (12 mm) below rings and anchor with pins.
- Seeding, hydroseeding, covering with sod or filling with aggregate are all recommended. Ensure even distribution on slope for best results.

### MAINTENANCE

Regular mowing, watering and sun exposure is required on all grass-covered installations.

### SLOPETAME3 INSTALLATION CROSS SECTION







## PRODUCT SIZES

- Lightweight injection-molded plastic units 40" x 40" x 1" high (1 m x 1 m x 0.025 m) with hollow rings rising from an open grid with full depth crossbars extending down each row and a vegetation-permeable geotextile fabric fused to the bottom of the grid.
- Unit weight = 3.3' x 3.3' (1 m x 1 m) = 3.2 lbs (1.45 kg), volume = 8% solid.
- The plastic shall be 100% recycled HDPE plastic resins, with 3% carbon black concentrate added for UV protection.
- Units are shipped in pre-assembled roll sizes of 32.8' x 3.3' (10 m x 1 m – 1010) and 65.6' x 6.6' (20 m x 2 m – 2020).
- Male/female fastener tensile strength (from a pull test) is equal to 450 lbsf/in (80,208 N/m).
- Standard color is black.





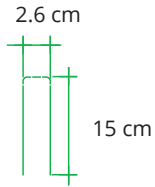




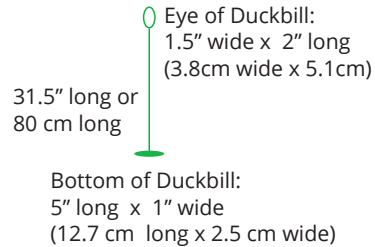
## DESIGN DETAILS

The design detail to use would be the standard detail we just updated with Nick's help on the measurements.

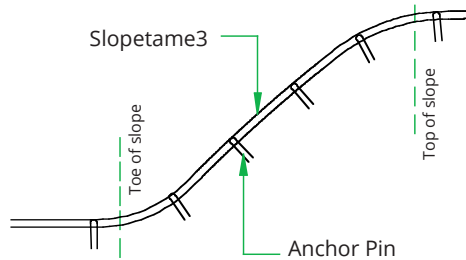
### TYPICAL ANCHOR PIN



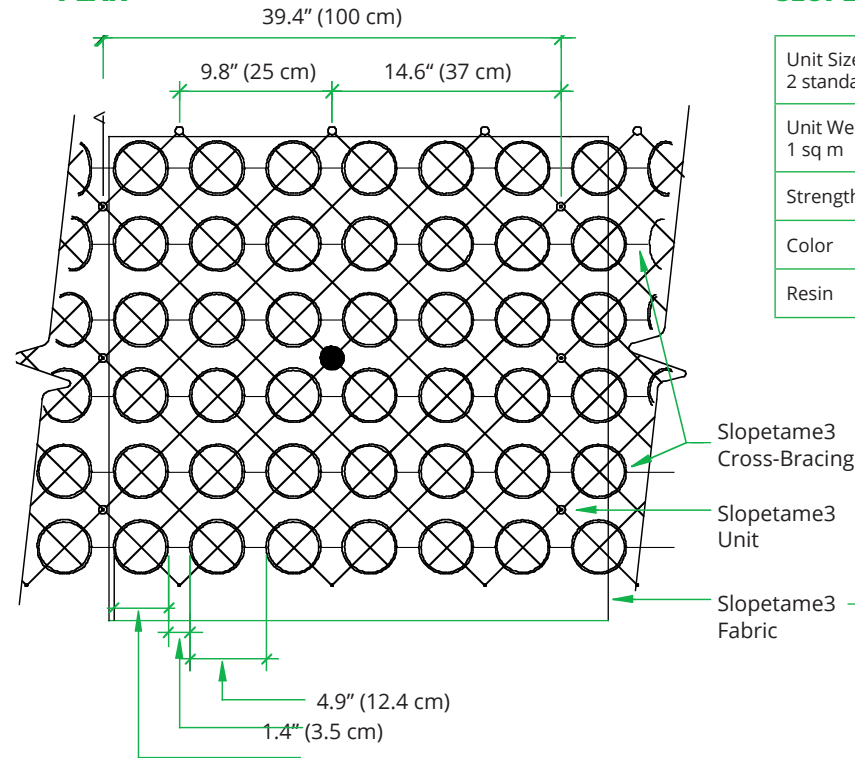
### DUCKBILL ANCHOR



### SLOPE CROSS SECTION



### PLAN



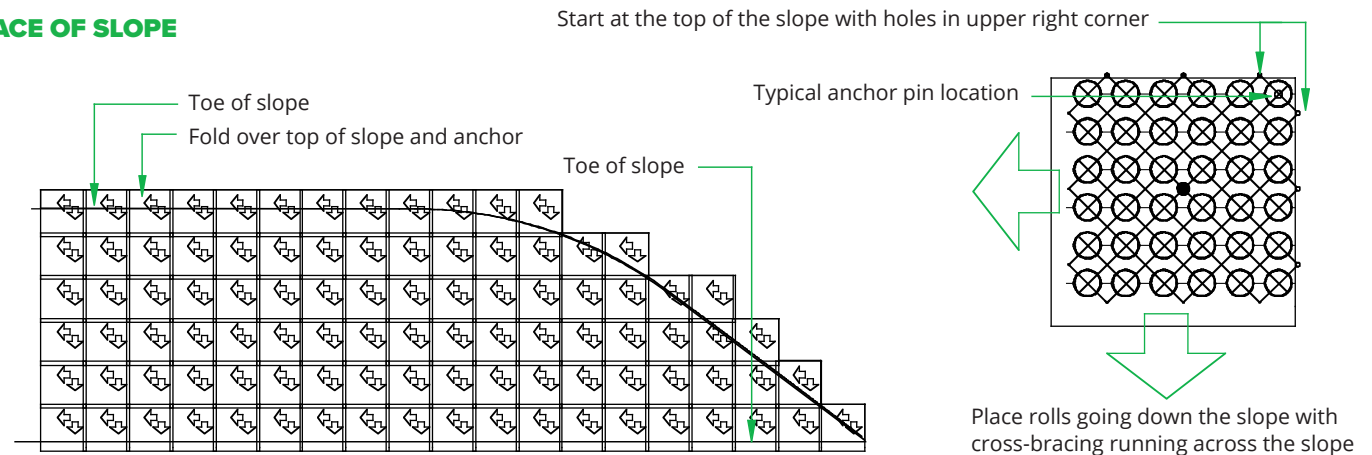
### SLOPETAME3 SPECIFICATIONS

Unit Size 2 standard roll sizes	39.4" x 39.4" x 1"	1 m x 1 m x 2.5 cm
Unit Weight 1 sq m	52.8 oz <b>or</b> 3.3 lbs	1497 g <b>or</b> 1.5 kg
Strength	402 kg/cm	5,729 PSI
Color	Black (Standard)	
Resin	100% Recycled HDPE	

### FABRIC

Weight	2.25 oz / sq.yd	76.3g / m
Tensile	65 x 40 lb/ft	5,729 PSI

### FACE OF SLOPE

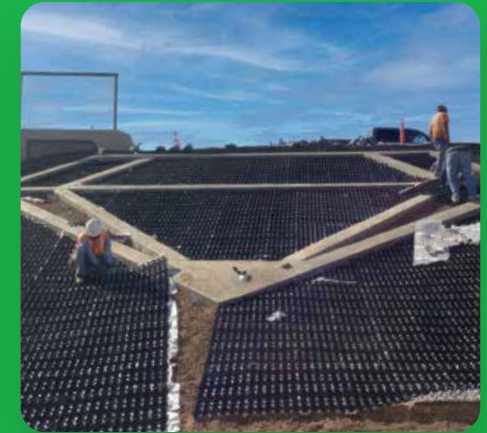




## FEATURED CASE STUDY

### “MURIETTA DIAMOND” INTERSTATE INTERCHANGE

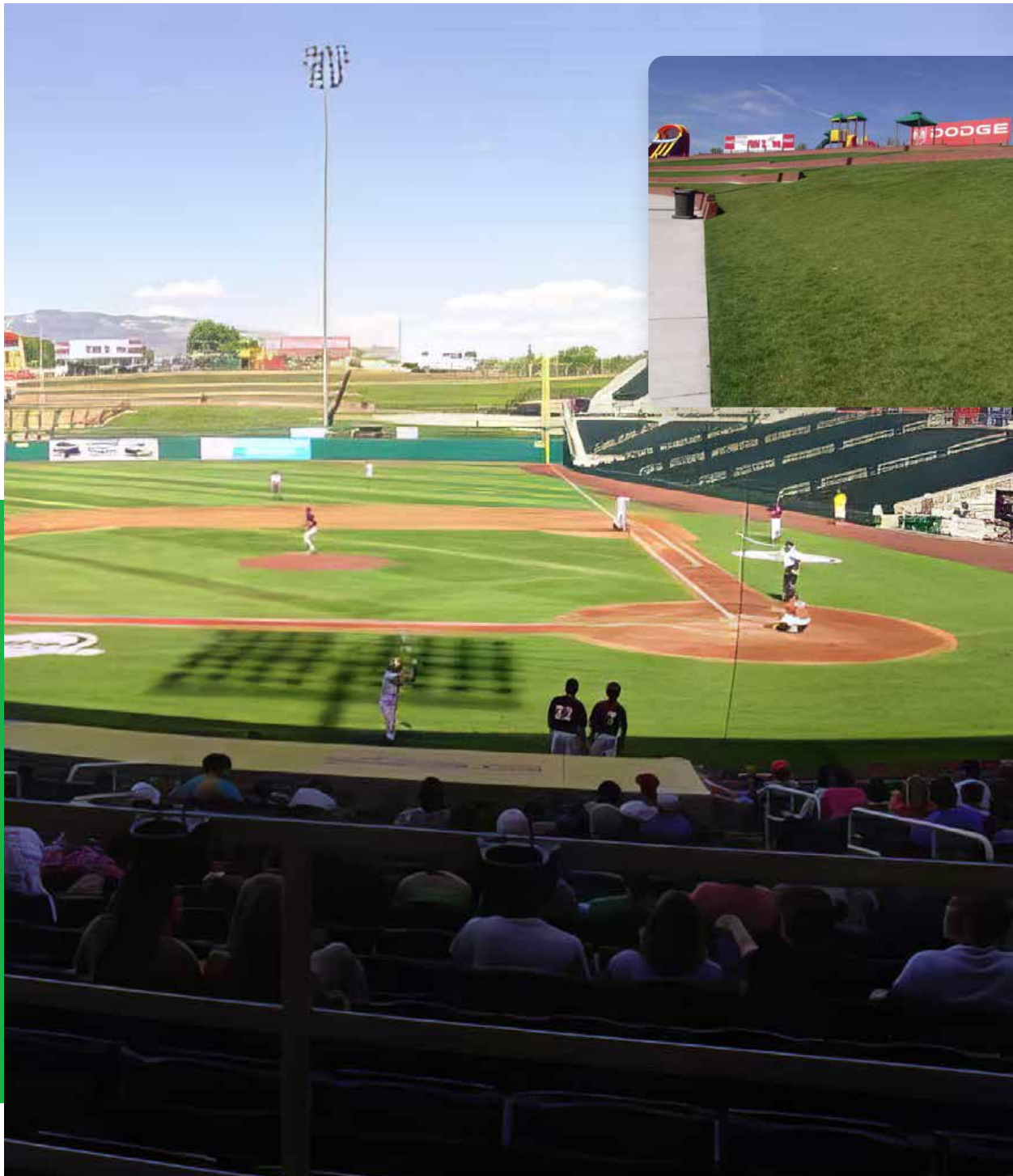
Caltrans and the City of Murietta partnered to improve the interstate interchange at I-215 and Los Alamos Rd in Murietta. Part of the improvement was to make the interchange more attractive and brand it more to the city. See how Slopetame3 improved the site through aesthetics, durability, and flexibility.



Read More



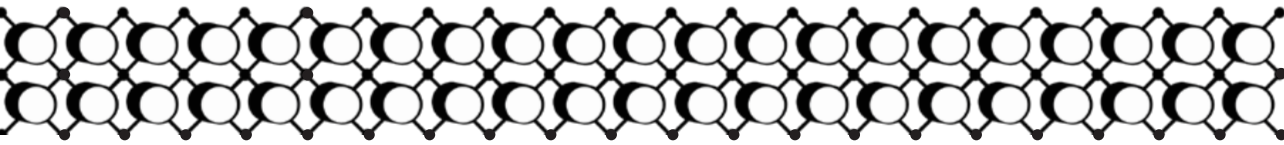




## ISOTOPES PARK BASEBALL STADIUM

The Isotopes needed soil stabilization done beautifully. Slopetame3 was the logical answer providing erosion control and grass coverage to match the nicely kept grounds and field. Grass slope areas beyond the fence and the outfield were all done in Slopetame3. From the Isotopes Official Website – “Beyond the right field fence is the Creamland Berm, a popular place for families to stretch out on a blanket and enjoy some baseball on a starry southwestern night.” The Creamland Berm is supported with Slopetame3.





# GROUNDING IN PERFORMANCE™

Invisible Structures is the leader in porous paving and stormwater management solutions. We enhance your project and the planet with strong, stylish, and streamlined solutions for

**GRASSPAVE2** | Grass Porous Paving  
BY INVISIBLE STRUCTURES™



**GRAVELPAVE2** | Gravel Porous Paving  
BY INVISIBLE STRUCTURES™



**RAINSTORE3** | Underground Stormwater Storage  
BY INVISIBLE STRUCTURES™



**SLOPETAME3** | Erosion Control  
BY INVISIBLE STRUCTURES™



**DRAINCORE2** | Drainage  
BY INVISIBLE STRUCTURES™



**BEACHRINGS2** | Portable ADA Access Mats  
BY INVISIBLE STRUCTURES™

How long can an Invisible Structures product last? We'll get back to you. All maintained installations are still functioning and beautiful!



Invisible Structures is the Industry's Trusted Choice in Porous Paving, Underground Water Containment and Stormwater Solutions Since 1982.



303.233.8383  
sales@invisiblestructures.com  
www.invisiblestructures.com