



BEACHRINGS2
BY INVISIBLE STRUCTURES™



**THE
WELCOME
MAT FOR
POSSIBILITY**



BEACHRINGS2

BY INVISIBLE STRUCTURES™

OVERCOME BARRIERS WITH OUR PORTABLE ACCESS MAT

Beachrings2 is an ADA-compliant walkway that provides access to some of nature's trickiest terrain, such as sand, mud, grass, gravel, and shallow snow. Introduced in the late 1980s, it was the first plastic portable access mat. The textured and slip-resistant surface stays cooler than sand in the hot sun, plus it's durable, UV resistant, and easy to clean.

Use these innovative, portable boardwalks to provide access for wheelchairs or baby strollers to beaches and playground equipment. Beachrings2 provides a firm disc textured surface for bare feet, shoes (even high heels), and wheels.

FLEXIBLE DESIGN

Customers can get a mat long enough to create a walkway or get two shorter mats and leapfrog wherever they'd like to go over sand. Mats can also be connected with included washers.





Beachrings2

“**SUPER EASY, SUPER HELPFUL**”

We just wanted to thank you so much for making this work for us. It was super easy... I attached a little string so I could carry the mats on my back and we are very thankful.”

~ Beachrings2 Customer,
Indiana, USA

STANDARD COLORS

Blue | Tan | Gray



BEACHRINGS2 ADVANTAGES



ADA Compliant



Slip Resistant



Lightweight



Affordable



Easy to Clean



Rolls Up for Storage



Flexes without Cracking

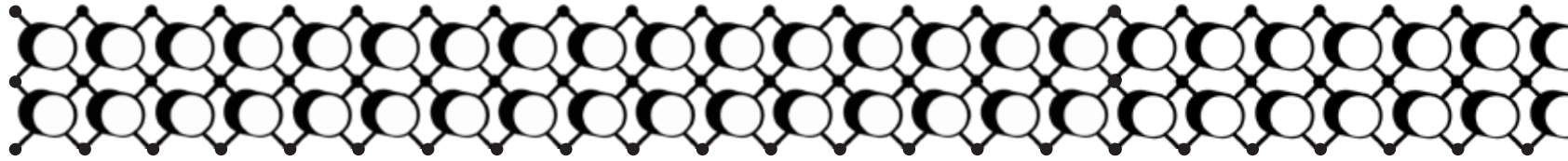


Conforms to Ground



**Permanent or
Temporary Joints**

APPLICATIONS



Beach/Sand



Loose Gravel



Muddy or Soft Soil Areas



Shallow Snow



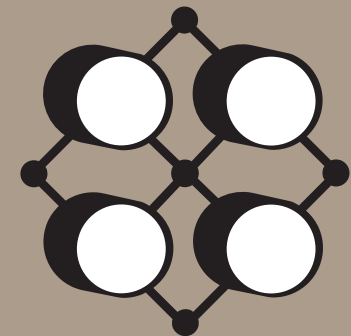
Event Flooring

IT'S EASY BEING GREEN

Sustainability starts from the ground up. Beachrings2 not only protects the environment, but it also enhances it. All our products are made from 100% recycled plastic—plastic that goes into improving the environment and not into a landfill.

Other benefits include:

- All our products are made from 100% recycled plastic.
- 1.5 million pounds of recycled plastic is used every year (and not sent to a landfill).
- Reduces site disturbance.



**1.5 MILLION
POUNDS**

of recycled plastic are used every year for Invisible Structures products.



Sustainability

INSTALLATION & MAINTENANCE

INSTALLATION

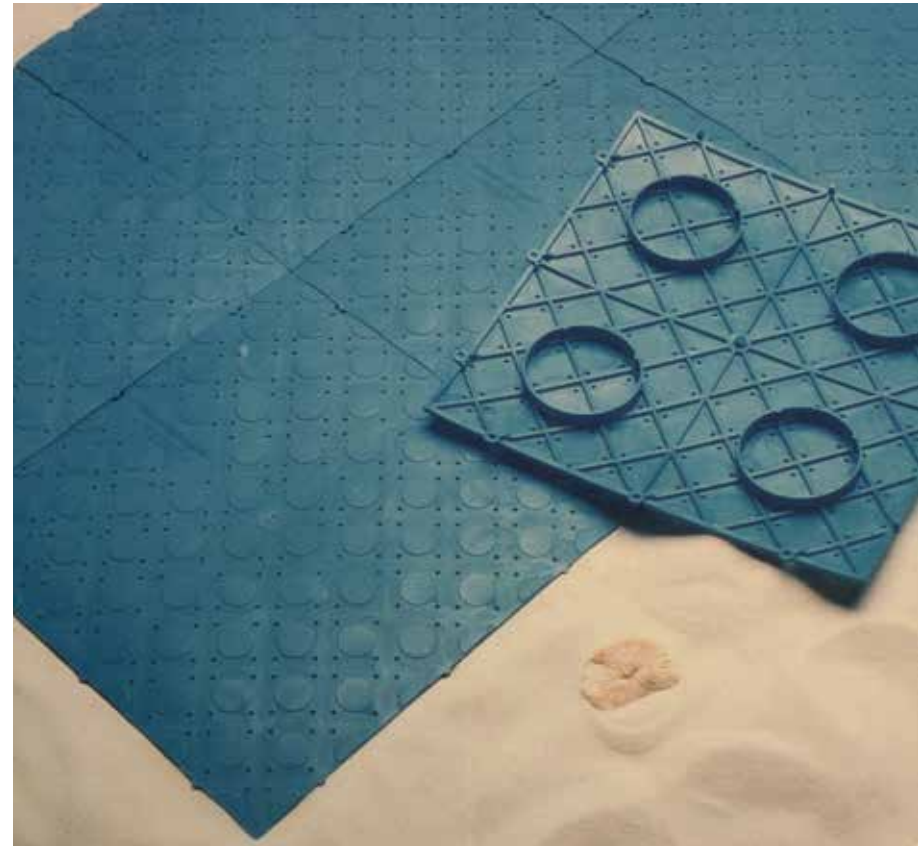
- Design gradients of paths to be as gentle as possible (consider use by child in manual wheelchair). Use switchbacks or other means to assist users in steep areas.
- Determine long term configuration of layout and decide size and shape of larger permanent modules to be fastened together.
- Larger panels should be easily rolled, lifted by one or two people, and set on end. Laying panels flat will put pressure on joints that may break.
- Prior to installing Beachrings2, the site should be raked to clear debris and sharp objects, to a relatively smooth surface (i.e. no deep footprints in soft sands).
- Assemble modules together leaving joints temporary by snapping joints together, or using nylon wire ties. You may wish to lay the rolls side by side without connecting them.
- Move mats when using beach cleaning equipment. Mats are lightweight and may need to be anchored, sandbagged, or removed in high wind situations. The rings on the bottom help keep the mats down under mild weather conditions.

MAINTENANCE

- Beachrings2 will require little maintenance under normal conditions. The product can be swept by hand or power broom, and power spray washed with detergents.
- Rainfall and spilled liquids will drain through the perforations and/or evaporate. The plastic material will not absorb liquids or stain from most materials.
- The plastic mats will burn and melt when held in direct contact to a flame, but will extinguish when the flame is removed. Burned or otherwise damaged units can be easily replaced with new units.
- Storage of the product should be in an enclosed facility with the product protected from sunlight, even though Beachrings2 has UV inhibitors. Product life will be extended if protected from light when not in use.
- Do not fold the mats and lay them down as this will unnecessarily put strain on the joints. Be sure to roll them, fasten with a bungee cord, and stand on end, with the pin side down. This is the form in which the product was delivered.
- Do not unroll or flex in very cold temperatures. The slight curve from rolling will return to a flat condition in a matter of hours upon exposure to warmth from the sun.

PRODUCT SIZES

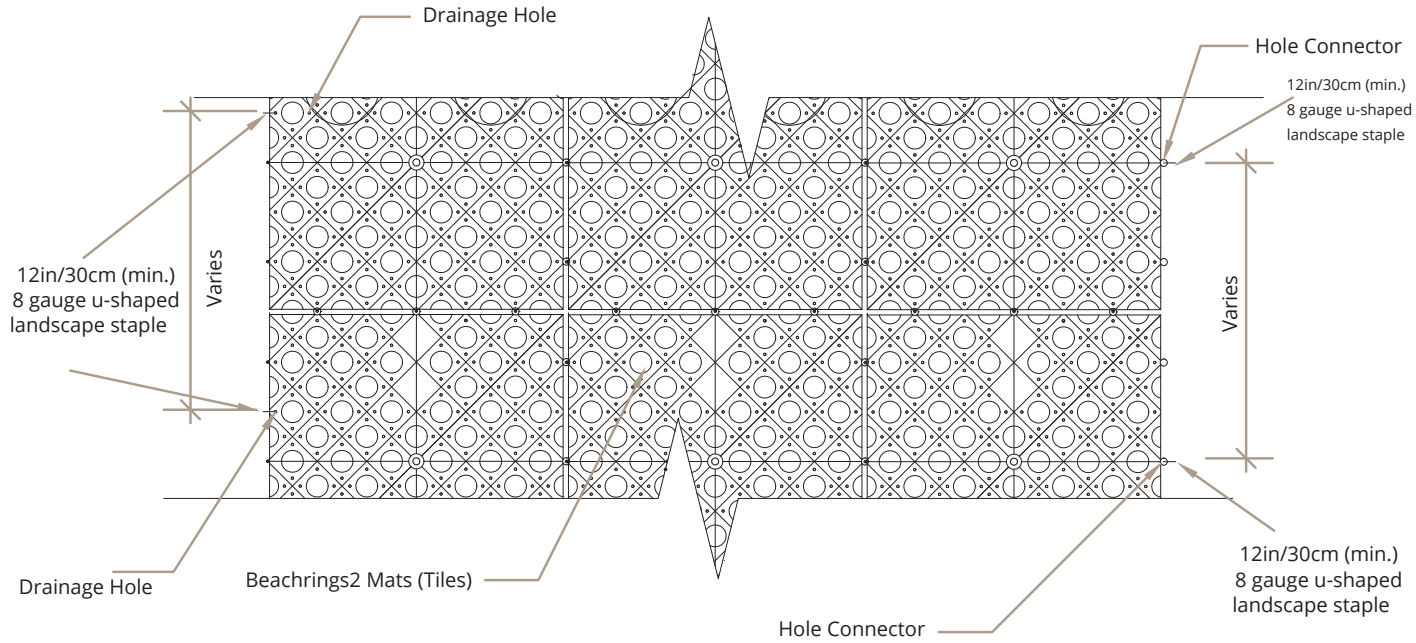
Unit Height	0.80 in	20 mm
Unit Width x Length	15.75 in x 15.75 in	0.4 m x 0.4 m
Area	1.72 sq. ft.	0.16 sq. m
Unit Weight	13 oz	370 g
Weight / Area	0.47 lb/sq. ft.	1.5 kg/sq. m.



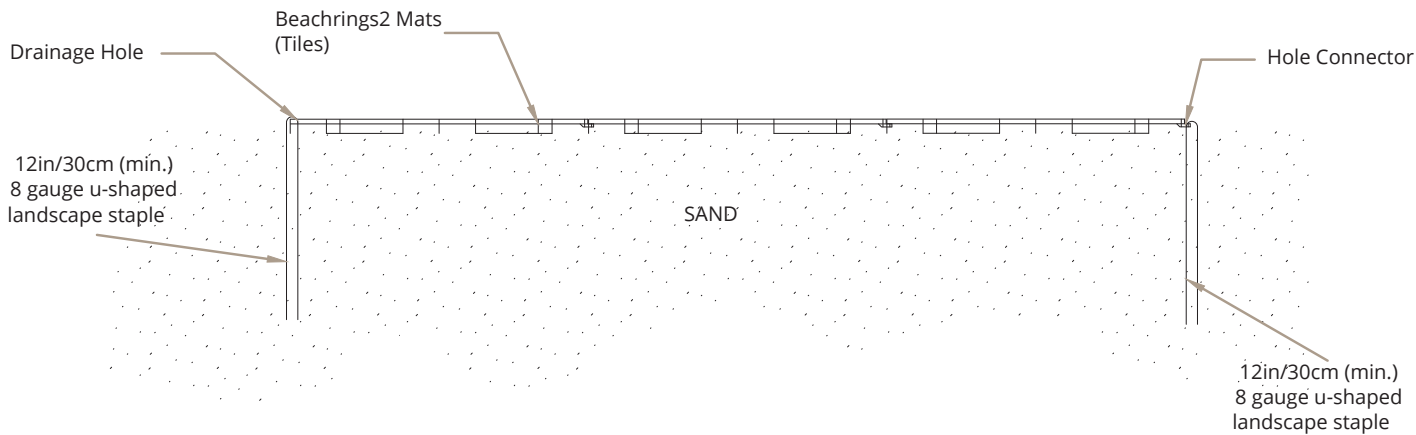
DESIGN DETAILS

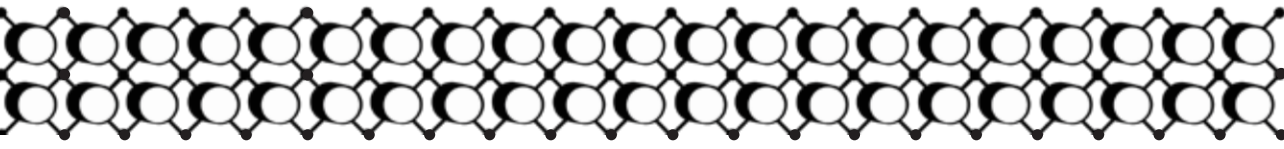
Pinning instructions plan view and section.

PLAN VIEW



SECTION





GROUNDING IN PERFORMANCE™

Invisible Structures is the leader in porous paving and stormwater management solutions. We enhance your project and the planet with strong, stylish, and streamlined solutions for:

GRASSPAVE2 | Grass Porous Paving
BY INVISIBLE STRUCTURES™



GRAVELPAVE2 | Gravel Porous Paving
BY INVISIBLE STRUCTURES™



RAINSTORE3 | Underground Stormwater Storage
BY INVISIBLE STRUCTURES™



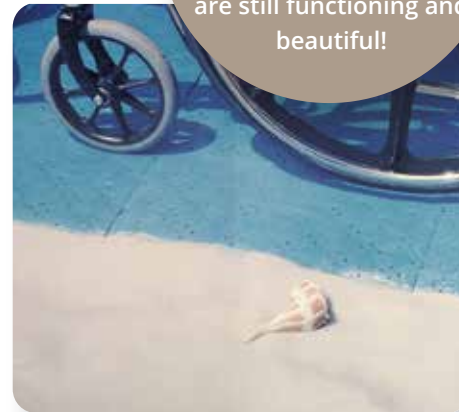
How long can an Invisible Structures product last? We'll get back to you. All maintained installations are still functioning and beautiful!



SLOPETAME3 | Erosion Control
BY INVISIBLE STRUCTURES™



DRAINCORE2 | Drainage
BY INVISIBLE STRUCTURES™



BEACHRINGS2 | Portable ADA Access Mats
BY INVISIBLE STRUCTURES™



INVISIBRICK | Modular Units
BY INVISIBLE STRUCTURES™



Invisible Structures is the Industry's Trusted Choice in Porous Paving, Underground Water Containment and Stormwater Solutions Since 1982.



303.233.8383
sales@invisiblestructures.com
www.invisiblestructures.com